

2023 YEAR IN REVIEW

IMPACT REPORT *Stories of impact that you made possible*

RECOVERY COACH PROGRAM SAVES LIVES

A mother is trying to save her son's life. After countless hours of seeking help for his addiction, her worst nightmare becomes reality. She hears her son fall and rushes to open the door. He is unconscious and not breathing. She calls 911 and watches as first responders bring him back to life. It's a miracle and she knows full well that many do not survive this type of an overdose.

Her son was admitted to Ascension St. Elizabeth Hospital, where he soon met with a recovery coach. The coach provided peer support and counseling. He received valuable resources about completing a substance use disorder treatment program. After her son completed his residential rehab program, he moved into transitional housing and is now six months sober.

For those struggling with addiction, a trip to the emergency department for an overdose can become the first step to recovery thanks to the Recovery Coach Program.

Recovery coaches and peer support specialists know first-hand what the patients are going through. They provide emotional support, help individuals overcome barriers and make connections to community resources to support the patient's recovery.

The Recovery Coach Program decreases the number of overdose fatalities in Wisconsin, increases treatment, provides recovery support to those struggling with addiction and reduces emergency department admissions due to overdoses.

Ascension Wisconsin provided 631 referrals to recovery coaches last year with 408 individuals consenting to meet with a recovery coach and 234 completing at least one follow-up visit with a recovery coach after discharge.

The Recovery Coach Program supports all Ascension Wisconsin hospitals and campuses in the state from Appleton to Racine, treating the overall health of our communities which is why the program is a statewide priority.



Total referrals to recovery coaches

631

Total individuals completing at least one follow-up visit

234

Dr. Julie Doniere, a physician with Emergency Medicine Specialists, noticed how many patients in emergency departments across Ascension Wisconsin were struggling with addiction and started one of the first recovery coach programs in Wisconsin in 2016.

“We hire peer specialists to manage workload and quality of work, provide education, support the program and work with community partners for collaboration. **There is great work being done here in Wisconsin to help reach this vulnerable population and meet more patients where they are,**” Dr. Doniere said.

This program is possible thanks to donor generosity to Ascension Wisconsin Foundation and multiple grant funding sources including the Wisconsin Department of Health Services and the ED2Recovery grant, funded through Wisconsin Voices to Recovery.

Thank you for making this program possible.

AREAS OF IMPACT

Every day, your support has a direct impact on patient-centered needs across Ascension Wisconsin. The highlights included in this impact report are just a small glimpse of that.

Visit giveAWF.org/blog to learn more about the patients that you help.

Cancer Care

Your support makes high-quality cancer care possible at all sites across Ascension Wisconsin. This year, you made it possible for our patients to receive this care at Ascension Wisconsin sites from Racine to Appleton. Thanks to you, the Foundation was able to fund life-saving care initiatives such as:

- Breast boards for radiation oncology, making treatment more precise
- Cancer Care ION robot, performing minimally-invasive biopsies in the lung
- Cancer Care Chemistry Analyzer, reducing the wait time for patients' lab analysis while undergoing chemotherapy
- Cancer Prevention and Wellness Program, preventing cancer before it happens
- Yoga Connection, a yoga class for patients with cancer

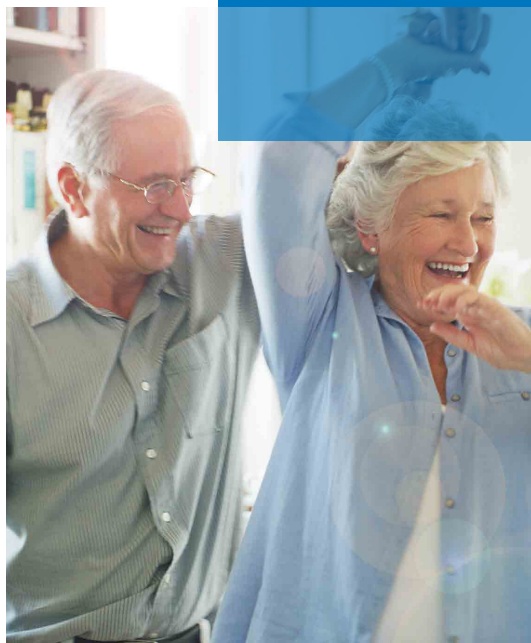
*In 2023, your support made it possible for associates at Ascension Wisconsin Cancer Centers to provide care to more than 27,360 patients across the state. **Thank you.***

"Cancer is personal, and so is the way we treat it. Ascension Wisconsin provides personalized care plans for each patient, letting them know that they are not alone in this journey.

Much of this care is made possible by people like you, generous donors, and I am so grateful for your support."

– BETH SCHMITT

Cancer Service Line Director, Ascension Wisconsin



Your support made it possible for

27,360

CANCER PATIENTS

77,000

HEART CARE PATIENTS

to receive personalized, compassionate care

Heart Care

Thanks to you, patients across Ascension Wisconsin can receive the high-quality heart care that they deserve. This care saves lives for patients like **Dave**.

After undergoing an elective coronary calcium test, Dave discovered that his levels were concerning and he needed to undergo a stress test. After that, he underwent a cardiac catheterization procedure where providers learned that he needed quadruple cardiac bypass surgery.

Dave's road to recovery was a long one after experiencing follow-up complications, but today he is healthy thanks to completing 12 weeks of cardiac rehabilitation.

"Across Ascension Wisconsin, our care teams provide advanced care for complex heart issues. Your support makes it possible for our providers to make a tangible difference and provide leading heart care close to home. Thank you."

– DAVID ASHPOLE, MD

Retired Cardiologist, Ascension Wisconsin

In 2023 your support made it possible to enhance heart care initiatives such as cardiac rehabilitation, transcatheter aortic valve replacement (TAVR) and community outreach efforts.

Thanks to you, heart care providers across Ascension Wisconsin were able to help more than 77,000 patients receive personalized, compassionate care close to home.

Thank you.

Behavioral Health

Nearly 900,000 adults in Wisconsin suffer from a mental health condition, and more than 70,000 Wisconsin children have depression. Knowing this, Ascension Wisconsin Foundation has supported numerous behavioral health advancements made possible thanks to generous people like you.

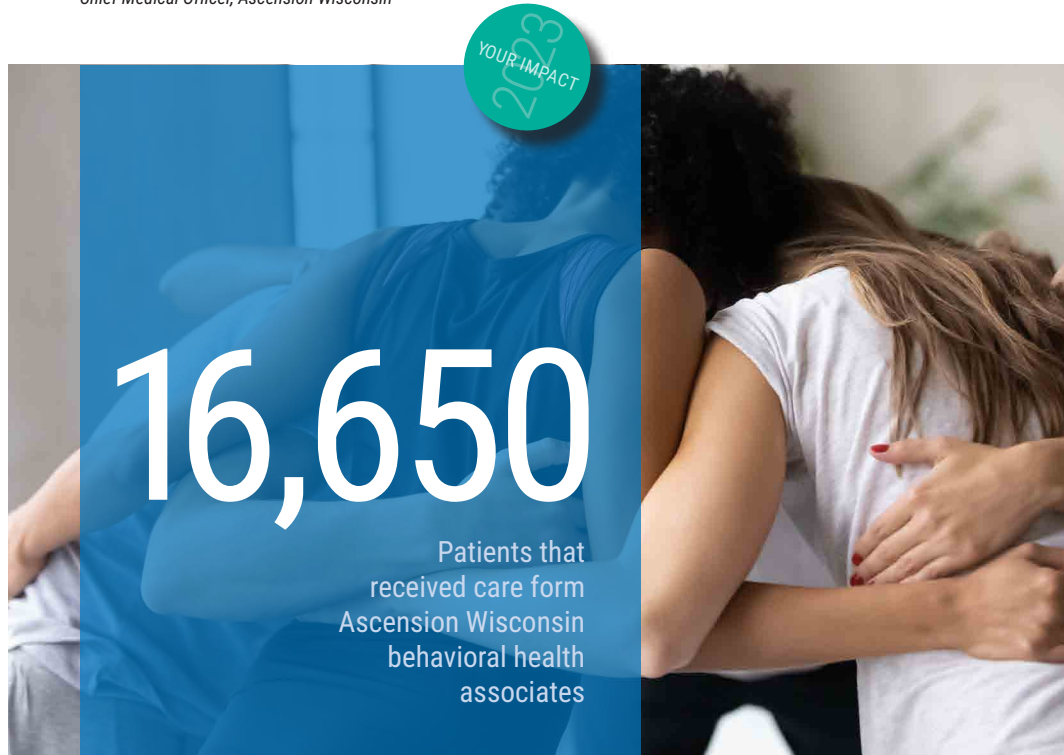
You make it possible to support behavioral health close to home through initiatives such as:

- Transcranial Magnetic Stimulation (TMS) therapy, a unique approach to treating medication-resistant mental illness
- Sensory room supplies for children, making visits to the hospital less stressful for young patients
- Support groups like Women of Worth, helping women on their path to sobriety
- Pediatric behavioral health unit upgrades, ensuring that patients are healing in a safe, comfortable environment

*In 2023, you made it possible for Ascension Wisconsin behavioral health associates to care for more than 16,650 patients. **Thank you.***

"Behavioral health is at the core of overall health, and we recognize that every person requires a different approach to treatment. Thanks to your support of Ascension Wisconsin Foundation, we are able to ensure that all patients can receive the care that they need to heal their mind, body and spirit."

– CHINTAN DESAI, MD, MSHI, CPE
Chief Medical Officer, Ascension Wisconsin



16,650

Patients that received care from Ascension Wisconsin behavioral health associates

4,173

Patients that received advanced neurological care

Neurological Care

Conditions of the brain and spine impact millions of people across the globe and close to home in Wisconsin. Across Ascension Wisconsin, providers offer advanced care to treat conditions such as dementia, stroke, epilepsy, multiple sclerosis and more.

Thanks to you, Ascension Wisconsin provided advanced neurological care to more than 4,173 patients in 2023. Your support makes it possible to fund valuable resources such as geriatric patient care navigators, weighted stroke boards and advancements for the neurosciences epilepsy program. **Thank you.***

"The brain is such a complex organ, which is why we offer unique treatment options for all patients. Being part of a national network with neurologic specialists allows us to stay ahead of complex neurological conditions, ensuring that all Ascension Wisconsin patients receive the care that they deserve."

– WILLIAM TAYLOR, DO
Neurologist, Ascension Wisconsin

* This number only includes unique patients seen by Ascension Medical Group physicians. The total number of patients seen across Ascension Wisconsin is larger than the data currently available.



CANCER CARE

GRANTS MAKING A DIFFERENCE FOR CANCER PATIENTS

A cancer diagnosis is typically accompanied by many unknowns and numerous questions as individuals navigate this new part of life.

While on this journey, grants from the **American Cancer Society (ACS)** and the **National Breast Cancer Foundation (NBCF)** to Ascension Wisconsin Foundation reduce the burden and stress associated with a cancer diagnosis.

This added layer of support empowers patients to focus on their health and well-being. With the help of the ACS and NBCF, Ascension Wisconsin providers can connect patients who are experiencing hardship and financial burden to resources so they can continue their treatment. This funding makes it possible to provide assistance with transportation, co-pays, prescriptions or cost of living expenses.

"The transportation assistance from the ACS is helping me drive the 80-mile daily round trip to receive the radiation needed for my prostate cancer. It was an unexpected surprise and I am very grateful to have received the financial help since I am on a fixed income."

- ASCENSION PATIENT

Helping patients heal

SUE is a 63-year old woman with Stage 4 breast cancer and has lived with the disease for the past 11 years. When the cancer progressed in 2019, she was no longer able to drive and her sister has been by her side ever since, making sure she gets to all of her medical appointments. Sue frequently expresses her gratitude for her sister, but she felt worry and guilt regarding the financial burden of her sister transporting her several times a week. When Sue explained in a meeting with her oncology social worker that she did not qualify for state or county funds, help was sought through the NBCF grant. Transportation assistance helped ease the weight of the expense, and relieved Sue's concerns so she could focus on her care.

MARY is currently receiving treatment for breast cancer. During treatment, she lost her job which resulted in household bills going unpaid for two months. Mary started a new job, but received assistance through the NBCF to help cover some of these household bills in order to look to a future without financial devastation.

Another patient shared, "The transportation assistance from the ACS is helping me drive the 80-mile daily round trip to receive the radiation needed for my prostate cancer. It was an unexpected surprise and I am very grateful to have received the financial help since I am on a fixed income."

Thank you

Through funding from organizations such as the ACS and NBCF and with your support to Ascension Wisconsin Foundation, all patients can focus on healing and receive the high-quality care that they deserve. Thank you for providing hope and making this possible.

